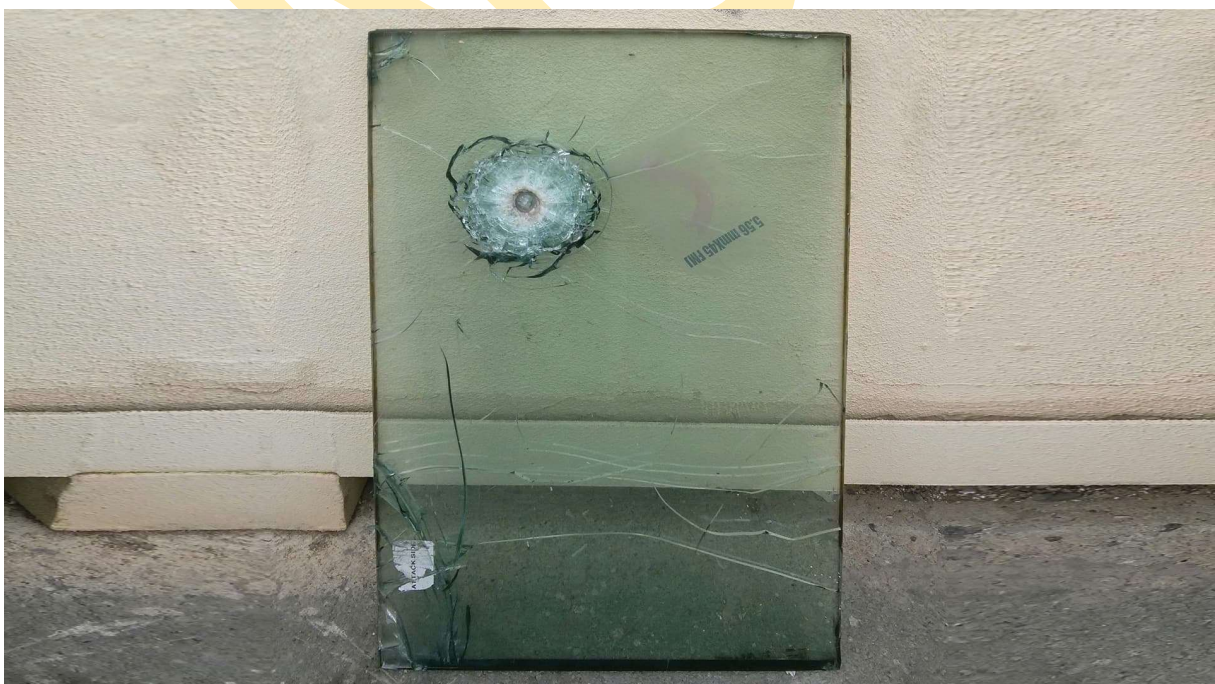


## Fortified Windows

Bullet proof and burglar proof windows in a variety of styles: permanent, energy absorbing, sliding, hopper windows.



Bullet proof window after a direct hit. The window saved the lives of soldiers of a UN International Peace Keeping force



Bullet proof windows externally installed in an old UN post

Regular or automatic opening, including internal coating to prevent fragmentation and slivers.

Installed in factories, strategic facilities, population concentrations, banks and other institutions.

The windows are bullet, blast and shrapnel proof.

## Armored Heavy Doors & Gates

Construction and installation of heavy doors and gates for specialized facilities to protect from heavy threats such as shrapnel, explosions, blast, weapons fire, Chemical and biological threats, car ramming, cold and hot intrusion, fire and more.



The designs and/or produces physical fortification including heavy gates and doors with a weight of tens of tons as well as fortified mechanisms against a wide range of threat scenarios.

In projects such as these, NS4i also constructs and installs the lifting equipment and all associated equipment required. These combine civil and electrical engineering, air conditioning, communications systems, structural frameworks, artisan frames, artistic frames, mechanics, welding and special cutting.

To execute these projects NS4i uses specialized equipment that ensures a perfect level of execution whilst meeting the challenges of transportation and installation.

All projects are executed according to ISO9001 standard and specialized quality assurance programs while preserving information security and appropriate security classifications.

## Mobile Concealment Wall

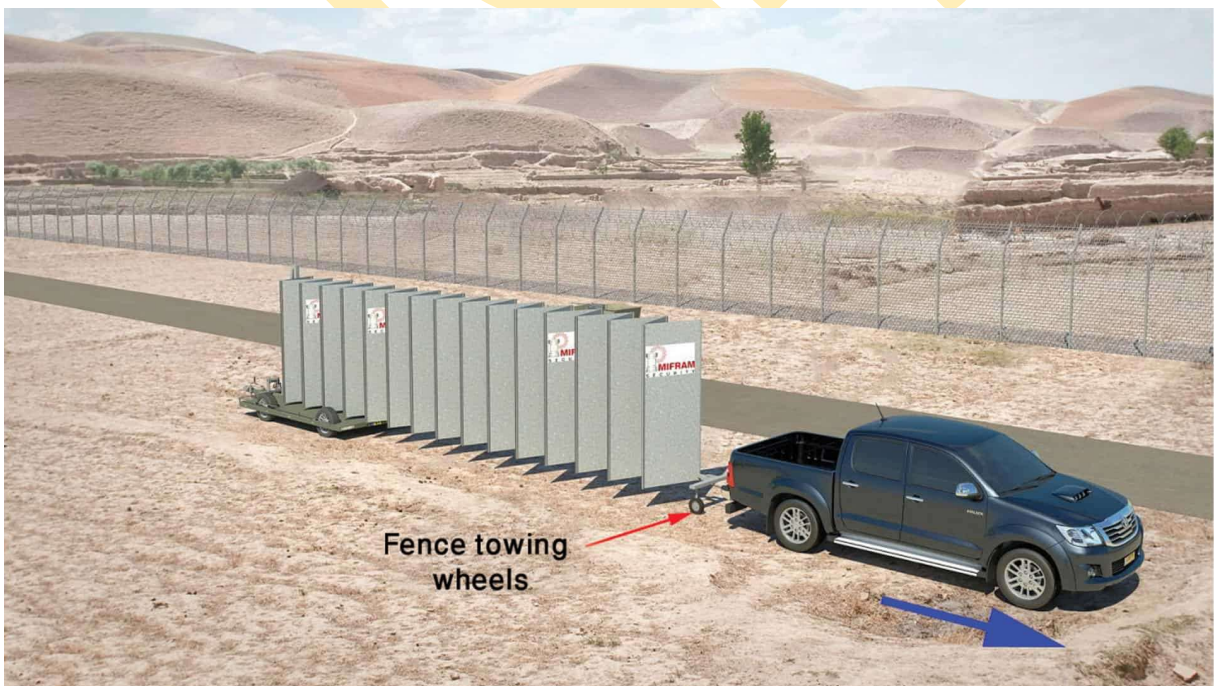
An accordion style mobile, transportable wall for concealment or blocking line of sight with thermal and / or ballistic screening for from vehicles or people. Ideal for concealing operations and protecting workers and equipment from snipers in threatened areas.



Opening the mobile concealment wall to its full length and anchoring it to a post with a weight – the mobile concealment wall makes it possible to execute hidden work



The mobile concealment wall closed – takes up almost no space



The mobile concealment wall can be extended using a car. The other end is anchored to the unit's base pallet



The open mobile concealment wall – is easily opened by one person into different configurations

**When upgraded to NIJ-III and NIJ-IV armor levels, the mobile concealment wall becomes a ballistic defense wall.**

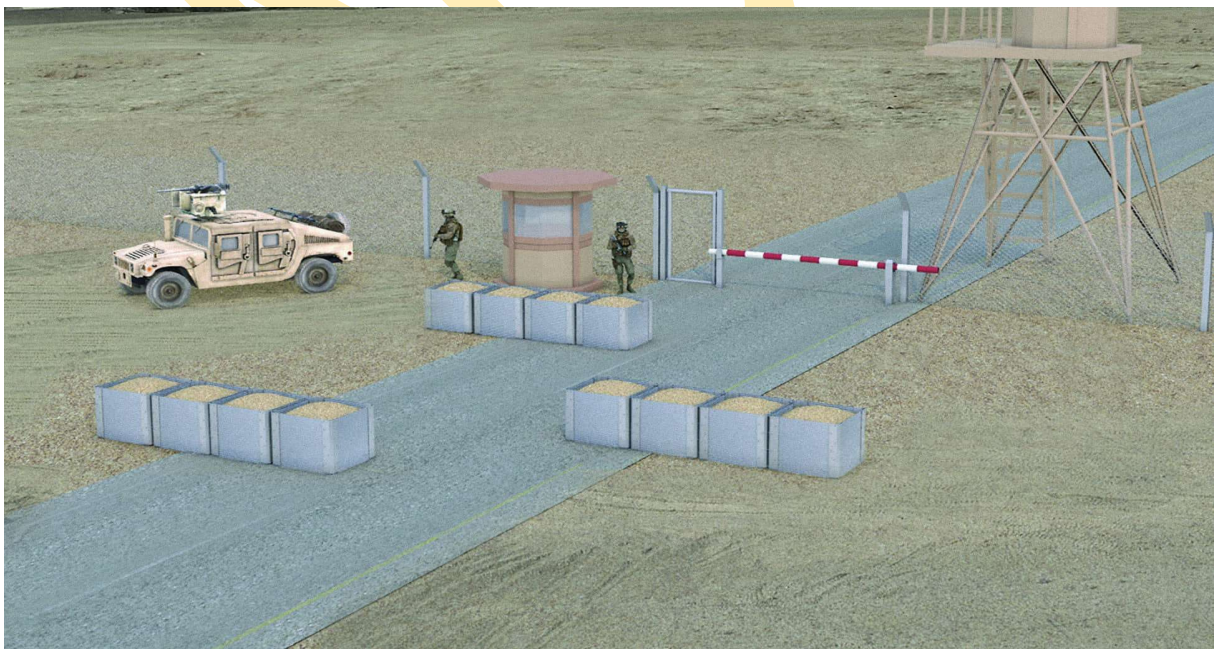
## Specific Barrier

Universal Specific barrier consisting of rolls of steel netting and geotechnical fabric or a rolled metal, galvanized and painted envelope – sand filled – and used for borders, vehicle barriers, preventing access and isolating threat areas and check points.

Specific barrier is a modular system for building barriers using reinforced steel netting or, in its other version, galvanized steel cells. The specific barrier is a universal, portable and easily installed barrier in any field conditions and prevents access by vehicles, people, motorbikes, animals and more.

### ADVANTAGES

- Any filling material can be used – dirt, sand, rock etc.
- The specific barrier can be emptied (metal version) and easily transported to a different location – reusable.



Protecting bases with circular and square specific barrier units





System used on Israel-Egyptian border to block roads from smugglers



Stopping medium and heavy vehicles and trucks on the border



Protecting bases



Easy transportation from location to location



12 galvanized metal Dune units, 2 meter diameter, on one pallet



Easy filling with sand using a tractor

## **THE SPECIFIC BARRIER IS AVAILABLE IN 2 MODELS:**

### **1. NETTING & STRENGTHENED GEO-TECHNIC CLOTH**

Made from galvanized, corrugated, painted steel net and geotechnical fabric – with floor. The fabric model is provided flat and takes up almost no space. It is easily deployed within a few minutes by just two soldiers.

### **2. METALLIC**

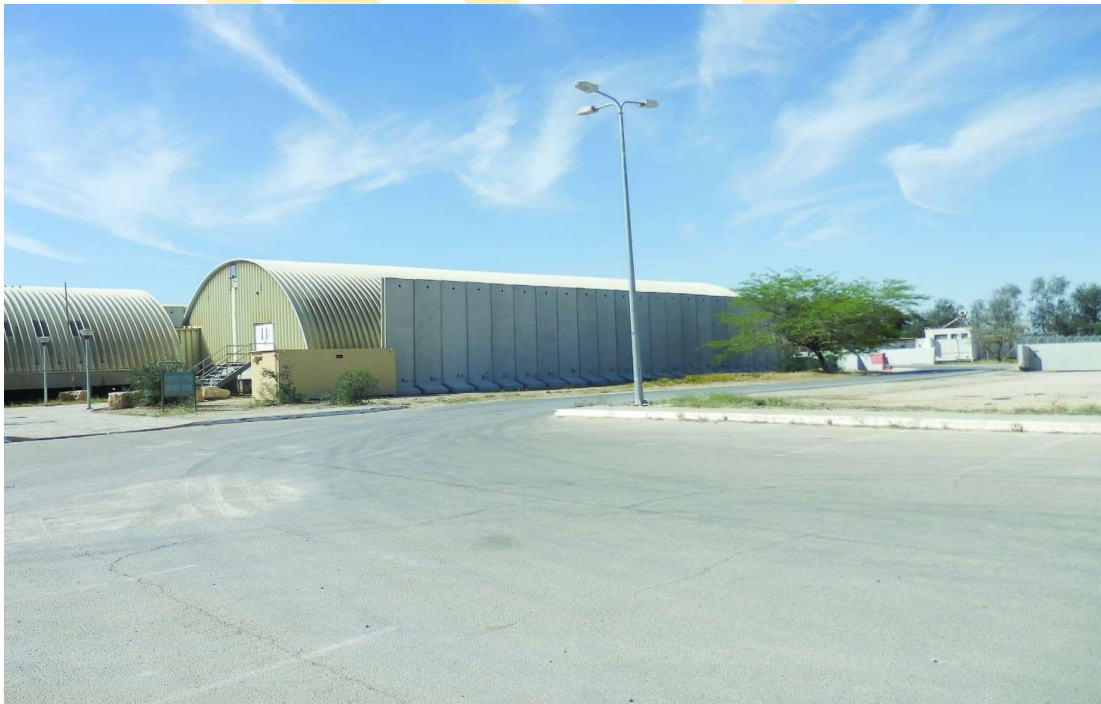
Made of galvanized and painted corrugated metal – no floor. The metallic model is supplied only in 40 cm rolls. The rolls are easily transported and deployed by two soldiers in just a few minutes.

### **Equipment needed for installation**

- Manpower for unloading
- Where sand is not available, crane truck and bigbags with sand
- Where sand is available – digger, mechanical shovel, bulldozer

## Concrete T Walls

3 – 6 meter high concrete walls for the fast construction of a protective wall, effective against low trajectory weapons (including near misses), small arms fire, shrapnel and blast.



# DEFENSE SYSTEMS

NS4i





Modular, prefabricated concrete walls brought to the area on trucks. Used for fast and easy wall construction.

The wall isolates the protected area from the threat area and is designed to provide protection for low trajectory fire, shrapnel and blast and to separate sensitive areas.

### **Advantages**

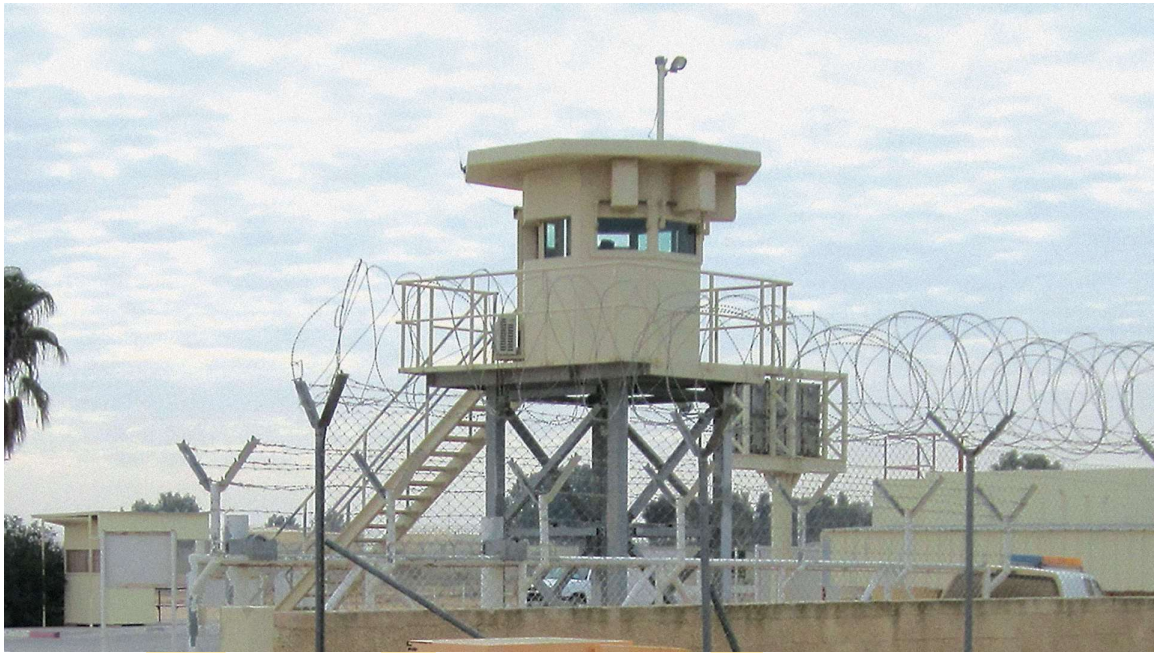
The use of modular, concrete sections creates a low cost continuous wall regardless of the terrain they are placed in.

Can be supplied in a range of heights and widths as per the client's requirements and threat levels.

The concrete is reinforced concrete – strength as per client's specifications.

## Millennium: Guard Tower

A bullet and explosive proof combat post designed for a range of uses: guard tower, check point, observation post, sangar, elevated sangar and more.





# DEFENSE SYSTEMS

NS4i



## **Advantages**

- A 360°, fortified fighting platform
- Automatically opening, fortified windows
- Mobile and immediately operational after placement on site
- Basic model effectively protected from 7.62 rounds
- Protected from ballistic threats and external explosions
- Provide a 360° field of view and fighting capability
- Can be located on the ground or on a tower

## **Optional upgrades**

Modular design allows the unit to be upgraded for specific threats

Can be purchased with a decorative finish, stone cladding etc.

Air conditioning

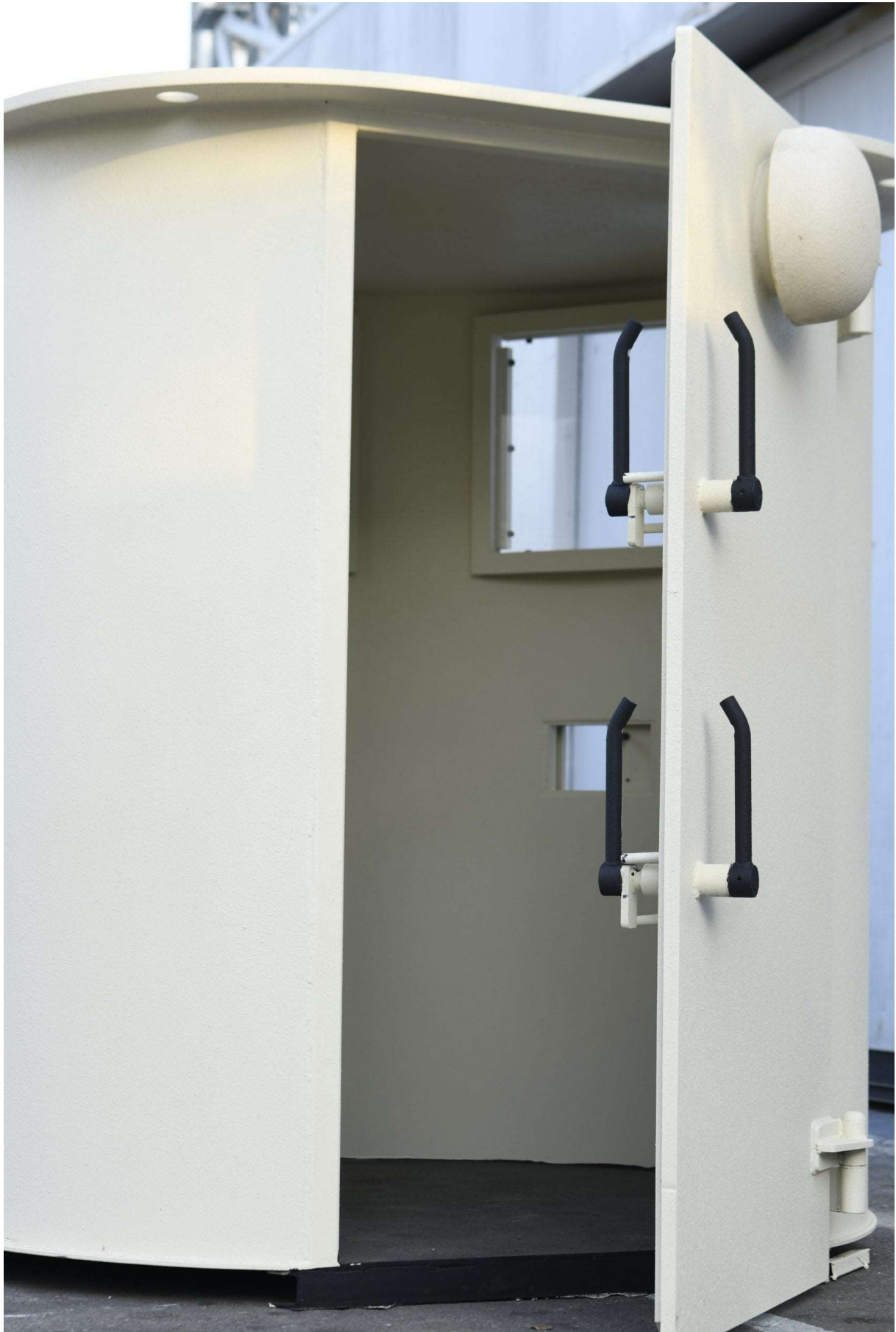
Many different types of Searchlight

## Guard Post: Bullet Resistant Guard Booth

An individual, mobile armored (bulletproof security booth) guard post providing comprehensive protection from bullets for security operatives from the front and the sides. The ideal solution for fast deployment for entrance control for sensitive facilities and sites. Includes an insulated roof.









# DEFENSE SYSTEMS

NS4i







# DEFENSE SYSTEMS

NS4i



## Features

### Protection raised

- up to NIJ4\ UL 752 level 8

### Customizable

- Range of sizes
- Range of colors

### Easy to deploy

### Benefits

Their low weight combined with portability allows these bullet resistant booths to be deployed to any location – easily and quickly with no need for any infrastructure.

### Add-ons

- Roof/walls Insulation
- Shooting Slots
- Sliding windows
- Electric system
- A/C
- Documents portholes
- Opening slots

### Round Post dimensions:

Diameter                    1.8 m (5.9 ft.)

Diameter                    2.2 m (7.2 ft.)

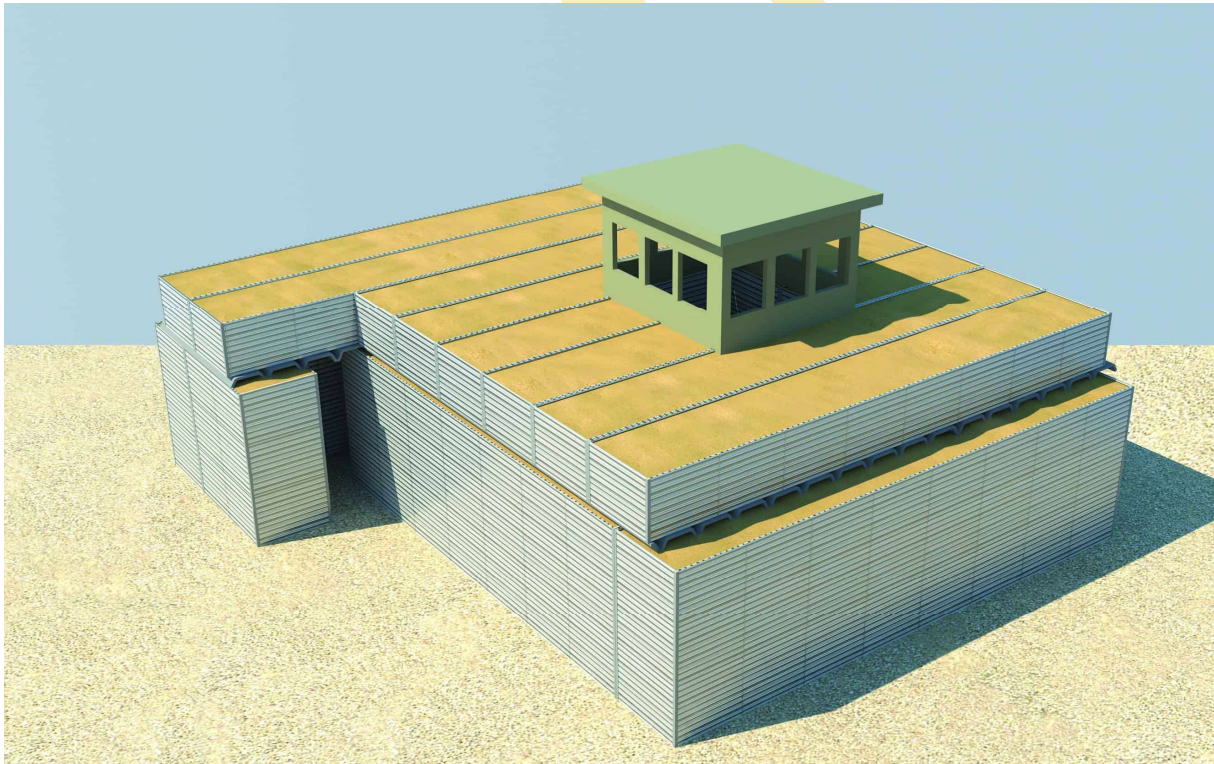
## Protective Wall

A modular protection system made from galvanized steel plates with internal supports and filled with sand.

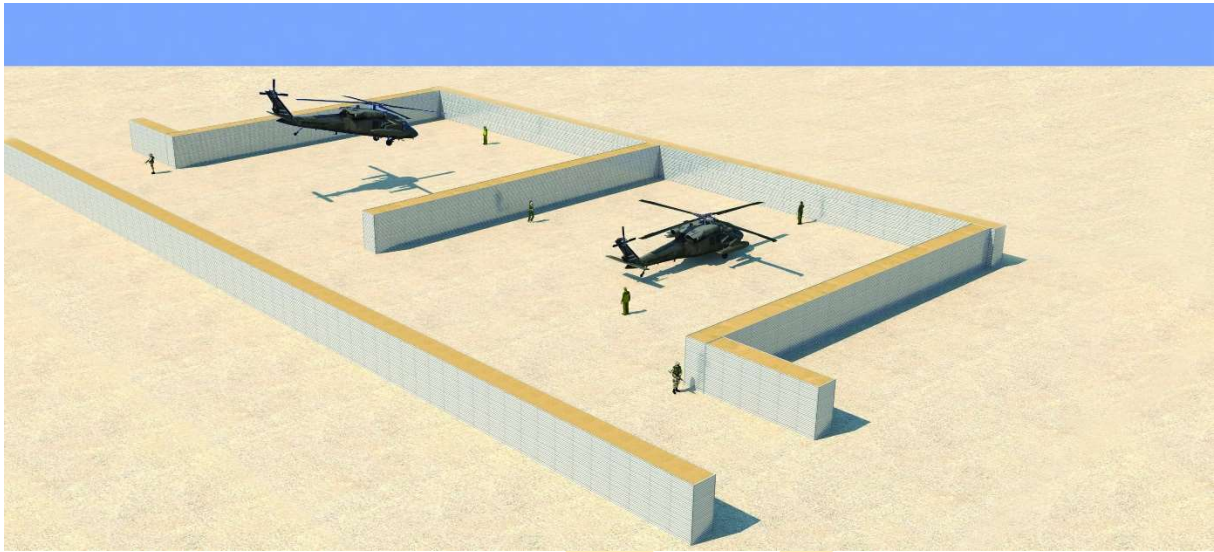
The system can be supplied in different sizes and configurations for use in a wide variety of purposes and scenarios.

Simple and easy manual assembly, no tools necessary.

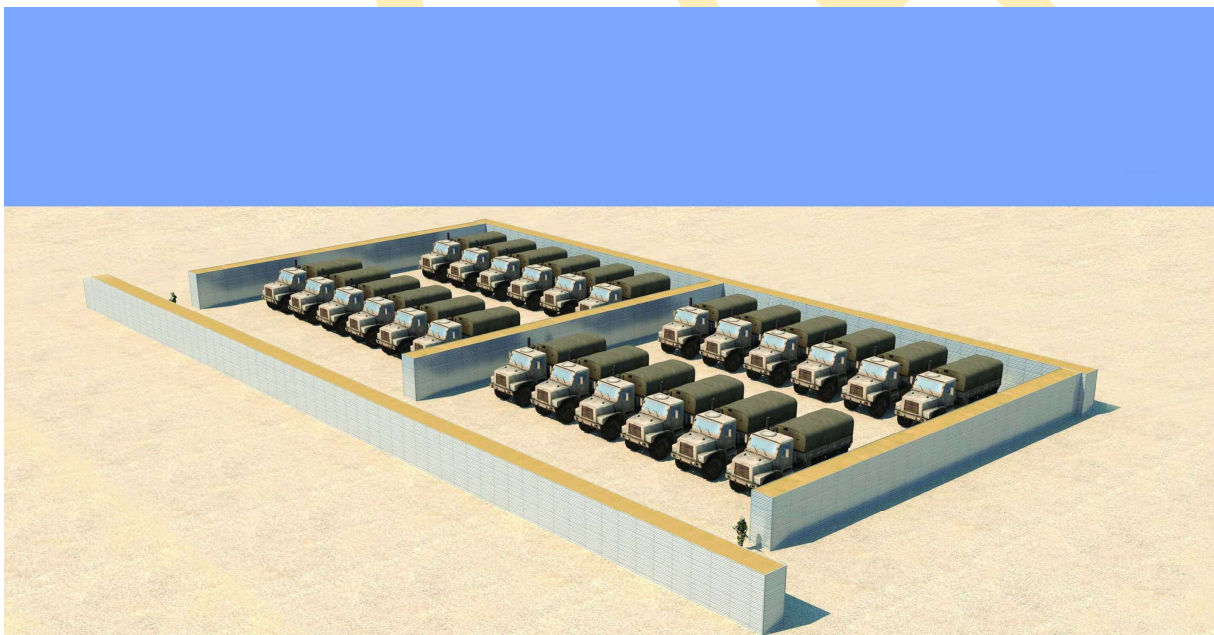
The system consists of easy to assemble and dismantable galvanized steel panels.



Construction of a spiral shaped protected area. All construction uses protective wall elements including the entrance, roof, observation and guard posts.



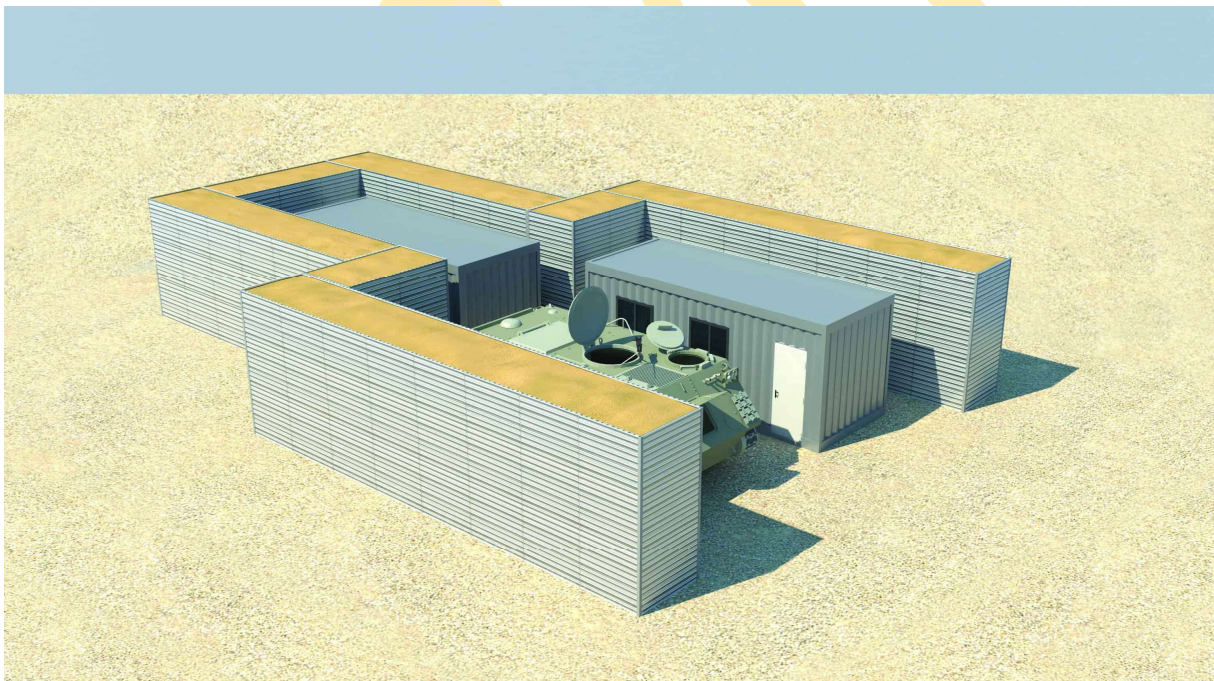
Protection for helicopters and landing pads



Protection for armored assault and other vehicles including munitions trucks



Protection for fuel, water, ammunition storage and other facilities



Front line bases and mobile command post protection



View from the inside

# DEFENSE SYSTEMS

NS4i



## **ADVANTAGES**

Wall sections are provided in a variety of thicknesses making the system suitable for protection, both at the front line and in civilian areas.

The filling material can be sand, gravel or any other readily available, inert material. Only the light, steel sheets must be transported to the site.

Assembly is simple and easy – the system consists of galvanized steel panels that are easy to assemble and disassemble.

The system can be used to create fences and partitions up to 5 m. high without the need for a wide base. If needed, wall sections are easily dismantled and moved to a new location for reuse.

